

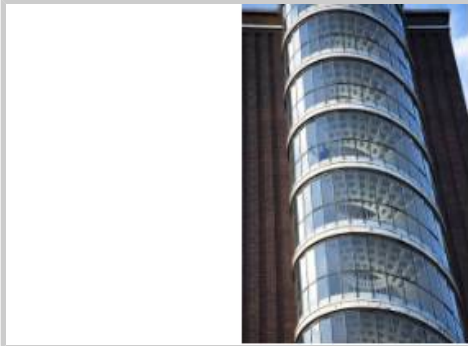


BREAST CENTRES NETWORK

Synergy among Breast Units

★ Hospital De Cruces - Baracaldo, Spain

General Information



New breast cancer cases treated per year 280

Breast multidisciplinary team members 16

Radiologists, surgeons, pathologists, medical oncologists, radiotherapists and nurses

The Breast Cancer Unit of Hospital de Cruces provides comprehensive multidisciplinary care to breast cancer patients since the early 80s. It is the largest centre of the Basque Country National Health Service in Northern Spain and is located close to the city of Bilbao. A highly motivated team of experts in all fields involved in breast cancer offers high standards of diagnostic procedures and medical and surgical treatment options. All the specialities that compound the Unit are located in the same building. Patients are referred to the unit, and all cases are discussed within multidisciplinary management meetings twice a week. Recommendations for further treatments are proposed for every patient. Reasonably long follow-ups are offered to the patients. We are connected to the regional breast cancer screening program for early detection and we regularly take part in international clinical trials.

Hospital De Cruces

Plaza De Cruces s/n

48903 Baracaldo, Spain

Phone: +34946006000

Fax: +34946006415

E-mail: contactoweb.cruces@osakidetza.net

Web-site: www.hospitalcruces.com

Available services

- Radiology
- Breast Surgery
- Reconstructive/Plastic Surgery
- Pathology
- Medical Oncology
- Radiotherapy

- Nuclear Medicine
- Rehabilitation
- Genetic Counselling
- Data Management
- Psycho-oncology
- Breast Nurses

- Social Workers
- Nutritional Counselling
- Survivorship Groups
- Sexual Health Counselling
- Supportive and Palliative Care
- Integrative Medicine

Radiology

- Dedicated Radiologists** 5
- Mammograms per year** 11000
- Breast radiographers**
- Screening program**
- Verification for non-palpable breast lesions on specimen**
- Axillary US/US-guided FNAB**
- Clinical Research**

Available imaging equipment

- Mammography
- Ultrasound
- Magnetic Resonance Imaging (MRI)

Available work-up imaging equipment

- Computer Tomography
- Ultrasound
- Magnetic Resonance Imaging (MRI)
- PET/CT scan

Primary technique for localizing non-palpable lesions

- Hook-wire (or needle localization)
- Charcoal marking/tattooing
- ROLL: radio-guided occult lesion localization

Available breast tissue sampling equipment

- Stereotactic Biopsy (Mammography guided)
 - Core Biopsy (Tru-cut)
- Vacuum assisted biopsy
- Ultrasound-guided biopsy
 - Fine-needle aspiration biopsy (FNAB, cytology)
 - Core Biopsy
 - Vacuum assisted biopsy
- MRI-guided biopsy
 - Core Biopsy
 - Vacuum assisted biopsy

Breast Surgery

- New operated cases per year (benign and malignant)** 325
- Dedicated Breast Surgeons** 4
- Surgeons with more than 50 surgeries per year** 2
- Breast Surgery beds** 9
- Breast Nurse specialists** 2
- Outpatient surgery**
- Intra-operative evaluation of sentinel node**
- Reconstruction performed by Breast Surgeons**
- Clinical Research**

Primary technique for staging the axilla

- Axillary lymph node dissection
- Sentinel lymph node biopsy:
 - Blue dye technique
 - Radio-tracer technique
 - Blue dye + Radio-tracer
- Axillary sampling

Reconstructive/Plastic Surgery

- Reconstructive/Plastic surgeons** 3
- Immediate Reconstruction available**

Type of breast reconstructive surgery available

- Remodelling after breast-conserving surgery
- Reconstruction after mastectomy:
 - Two-stage reconstruction (tissue expander followed by implant)
 - One-stage reconstruction
 - Autogenous tissue flap
 - Latissimus dorsi flap
 - Transverse rectus abdominis (TRAM)
 - Free-flaps (free TRAM, DIEP, SIEA, gluteal, etc.)
- Surgery on the contralateral breast for symmetry

Pathology

- Dedicated Breast Pathologists** 2

Available studies

- Cytology
- Haematoxylin & eosin section (H&E)
 - Surgical specimen
 - Sentinel node
 - Core biopsy
- Frozen section (FS)
 - Surgical specimen
 - Sentinel node
- Immunohistochemistry stain (IHC)
 - Estrogen receptors
 - Progesterone receptors
 - HER-2
 - Ki-67

Other special studies available

- Fluorescence in-situ Hybridization for HER-2 gene (FISH)
- Oncotype Dx (21-gene assay)
- MammaPrint (70-gene microarray)
- Prediction Analysis of Microarray 50-gene set (PAM 50)

Parameters included in the final pathology report

- Pathology stage (pT and pN)
- Tumour size (invasive component in mm)
- Histologic type
- Tumor grade
- ER/PR receptor status
- HER-2/neu receptor status
- Peritumoural/Lymphovascular invasion
- Margin status

Medical Oncology

- Dedicated Breast Medical Oncologists** 2
- Outpatient systemic therapy**
- Clinical Research**

Radiotherapy

Dedicated Radiation Oncologists

Clinical Research

Available techniques after breast-conserving surgery (including experimental)

Whole-Breast RT (WBRT)

Partial breast irradiation (PBI):

External beam PBI

Interstitial brachytherapy

Targeted brachytherapy (MammoSite, SAVI applicator, other devices)

Intra-operative RT (IORT)

Multidisciplinary Meeting (MDM) / Tumour Board (TB)

Regular MDM/TB for case management discussion

Twice a week

Weekly

Every two weeks

Other Schedule

Cases discussed at MDM/TB

Preoperative cases

Postoperative cases

Specialties/services participating in MDM/TB

Radiology

Breast Surgery

Reconstructive/Plastic Surgery

Pathology

Medical Oncology

Radiotherapy

Genetic Counselling

Breast Nurse Service

Psycho-oncology

Further Services and Facilities

Nuclear Medicine

Lymphoscintigraphy

Bone scan

Positron Emission Tomography (PET)

PET/CT scan

Rehabilitation

Prosthesis service

Physiotherapy

Lymph-oedema treatment

Genetic Counselling

Specialist Providing Genetic Counselling/Risk assessment service:

Dedicated Clinical Geneticist

Medical Oncologist

Breast Surgeon

General Surgeon

Gynaecologist

Genetic Testing available

Surveillance program for high-risk women

Data Management

Database used for clinical information

Data manager available

Contact details

Radiology

Luis Larrea, MD	Head of Radiology Department	luis.larreabilbao@osakidetza.net
Maria Pilar Utrilla, MD	Staff member	jcortazar@euskalnet.net
Maite Ezquerro, MD	Staff member	maitalber@hotmail.com
Gemma Taberner, MD	Staff member	m.gemma.tabernerjubindo@osakidetza.net
Jorge Cena, MD	Staff member	jorge.cenasantorcuato@osakidetza.net
Begona Cantelli, MD	Staff member	zucantel@terra.es
Aranzazu Urresola, PhD	Staff member	aranzazu.urresolaolabarrieta@osakidetza.net

Breast Surgery

Salvador Lujan, MD	Head of Breast Cancer Surgical Division	salvador.lujanalcalde@osakidetza.net
Gaizka Mallabiabarrena, MD	Staff surgeon	mallabia65@gmail.com
Eduardo Ibanez, MD	Staff surgeon	eibanez@euskalnet.net
Javier Diez, MD	Staff surgeon	javier.diezgarcia@osakidetza.net
Patricia Cobos, MD	Staff surgeon	pcobosb@gmail.com
Borja Otero, MD	Staff surgeon	borja.otero@gmail.com
Txanton Martinez-Astorkiza, PhD	Head of Gynecology Department	txanton.martinezastorkiza@osakidetza.net

Reconstructive Surgery

Javier Gabilondo, MD	Head of Plastic Surgery Department	javier.gabilondo@osakidetza.net
Eduardo Vicario, MD	Staff Surgeon	eduardo.vicarioelorduy@osakidetza.net
Jaime Carames, MD	Staff Surgeon	jaimecarames@hotmail.com

Pathology

Jose Ignacio Lopez, PhD	Head of Pathology Department	joseignacio.lopez@osakidetza.net
Juan Burgos, PhD	Staff member	burgosbret@terra.es
Leire Andres, MD	Staff member	leire.andresalvarez@osakidetza.net

Medical Oncology

Guillermo Lopez Vivanco, MD	Head of Medical Oncology Department	guillermo.lopezvivanco@osakidetza.net
Josefa Ferreiro, MD	Staff member	josefa.ferreiroquintana@osakidetza.net
Abigail Ruiz De Lobera, MD	Staff member	abigail.ruizdeloberamartinez@osakidetza.net

Radiotherapy

Pedro Bilbao, PhD	Head of Radiotherapy Oncology Department	pedro.bilbaozulaica@osakidetza.net
Blanca Ruiz, MD	Staff member	blanca.ruizsaiz@osakidetza.net

How to reach us



Hospital De Cruces

Plaza De Cruces s/n

48903 Baracaldo, Spain

Phone: +34946006000

Fax: +34946006415

E-mail: contactoweb.cruces@osakidetza.net

Web-site: www.hospitalcruces.com

From airport:

Bilbao Airport is located 9 Km north of Bilbao. There is a shuttle bus service to Bilbao. Get off at Termibus Station. It takes about 20 minutes.

By bus or sub-way/underground:

Metrobilbao (subway). Line 2. Access: Cruces(hospital).

By car:

Highway E-70/A-8 : Santander direction. Exit: Aireportua-Aeropuerto / Leioa / Getxo. Continue (turn right): 8 / H-Gurutzeta-Cruces / Baracaldo /Bilbao Exhibition Centre . Continue (turn right): N-634/ H-Gurutzeta-Cruces/ Zorrotza.

Last modified: 06 December 2013